

“Fixed Frequency” Bases for Institutions and Administrators

Setting Your “Fixed Frequency” Bases

(firmware revision 2.04)

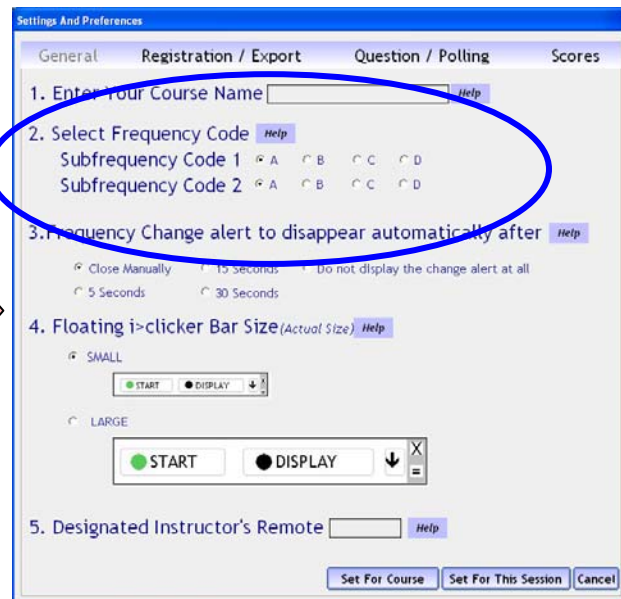
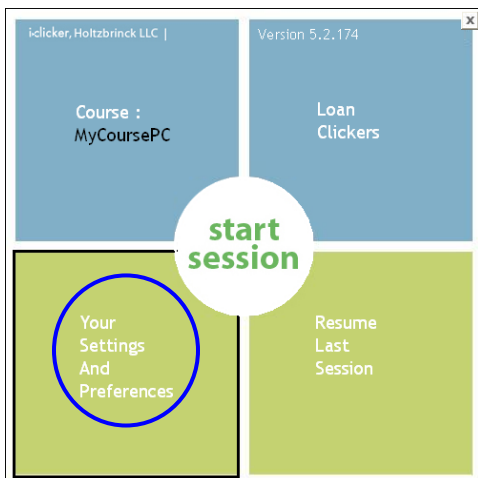
Thank you for considering (or adopting) i>clicker! For institutionalized/centralized adoptions, i>clicker can provide administrators with “fixed frequency” bases that prevent individual instructors from changing the sub-frequency themselves. This solution is attractive to administrators who are installing i>clicker bases into set classrooms and coordinating the sub-frequency channels institutionally.

The “fixed frequency” bases are slightly different in firmware; we can provide the specially coded bases upon request (to centralized adopters only). We also provide a small executable software application for “hard-coding” the sub-frequency.

The below documentation provides you with step-by-step instructions for setting your sub-frequencies with your “fixed” bases.

Overview/Standard Sub-Frequency Settings:

The i>clicker base units can be set to any of 16 different sub-frequencies (e.g. AA, BB, AC) to prevent interference with nearby classrooms if two instructors are using i>clicker in close proximity. Normally, individual instructors can change their sub-frequency via our Settings/Preferences. If the frequency is not explicitly changed in Settings/Preferences, the base will operate on the default frequency AA, which is the same frequency that the student clicker units use (by default).



If an instructor wants her class to operate at a different frequency (say BB), then she would normally do two things at the beginning of the semester:

- 1) Set the base frequency to BB in Settings/Preferences and select “set for course”.
- 2) Instruct her students they need to set their clickers to frequency BB at the start of every class. The very simple instruction on to do this are printed on the back of each clicker and students can also read instructions on screen before polling begins.

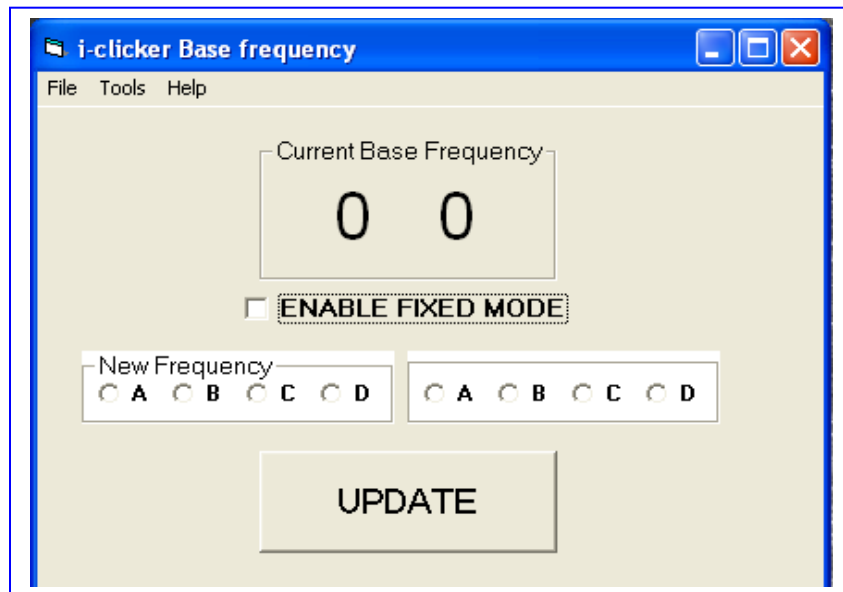
With the “fixed frequency” solution:

- The base remembers and automatically uses the same frequency every time it is plugged in and active, and
- The frequency the base operates can't be changed using the frequency options within the Settings/Preferences pages of the i>clicker software application.

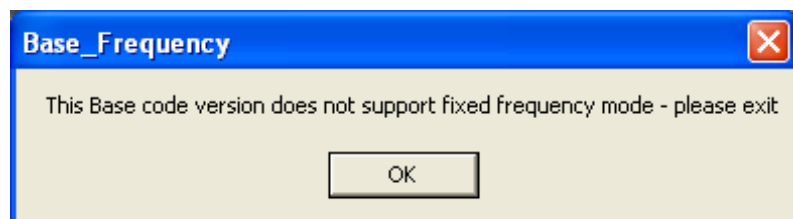
The “fixed frequency” is set using a stand-alone software application, “BaseFrequency_v3.exe”. With this program, you can designate (and/or change) the “fixed frequency” on a given base as often as needed. The steps are outlined below, but there are also “help” features in the program itself.

Using BaseFrequency_v3.exe:

1. Make sure you have a quantity of “fixed frequency” bases with special firmware. To request “fixed frequency” bases, contact your local i>clicker representative or email us at sales@iclicker.com.
2. Connect the “fixed frequency” base to your computer through the USB port. Your computer will tell you that it has recognized new hardware and inform you when it is ready to use it (this takes a few seconds).
3. Unzip the “Fixed Frequency” zip file (if you've not already done so). Locate and open the BaseFrequency_v3.exe icon and you should see the following screen:

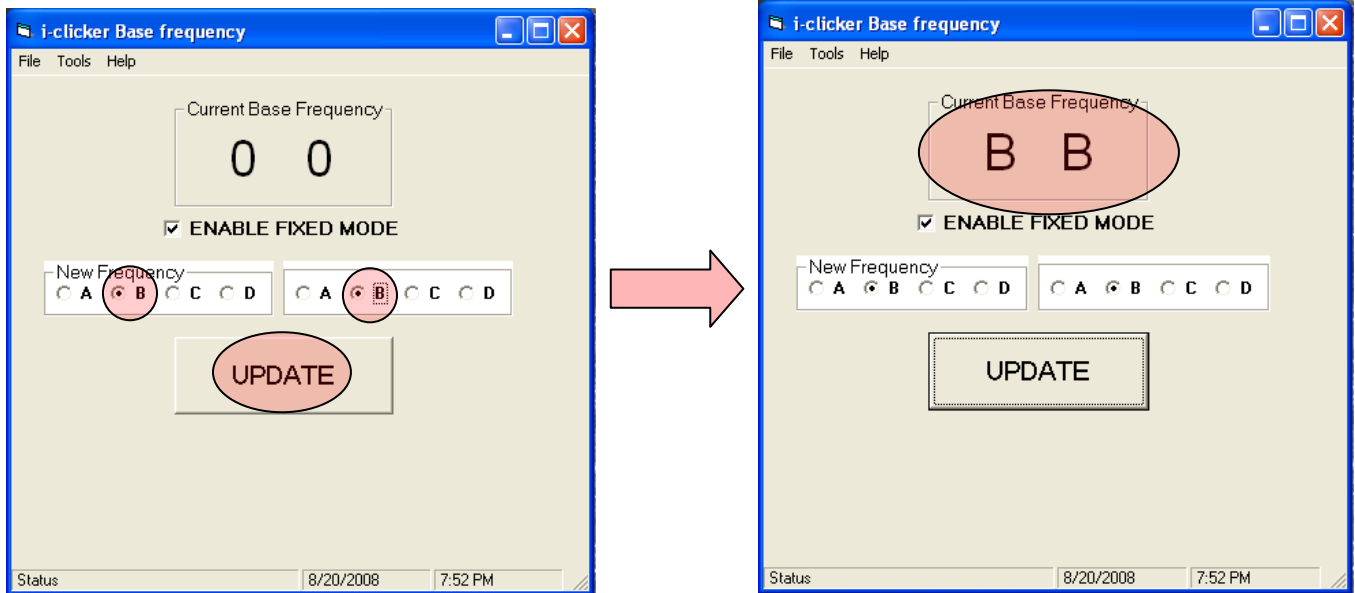


Troubleshooting tip: If you receive the below message, the base you are trying to program does not have the firmware to allow for “fixed frequencies.” This application only works on bases with slightly adapted firmware (v2.04). Test your other base stock and/or contact your i>clicker representative to request a specially programmed base.



4. If a fixed frequency is already set on the base, the “fixed” frequency will be displayed in the “Current Base Frequency” box when the software first opens.

5. To change or set a fixed frequency for the base, use the radio buttons to select the frequency code you want (e.g. BB below) and then click the “UPDATE” button. The program will update the base with the new frequency and will then verify that the operation worked by reading the frequency back from the base and displaying it in the “Current Base Frequency” box.



Note: You will need to select two letters to successfully set the sub-frequency for each base (e.g. BB, not just B).

6. Exit the program and unplug your base from your computer. Connect the base back to your computer and check the frequency to make sure your settings were saved.

7. Repeat this process for each “fixed frequency” base you need.

Restoring a “Fixed Frequency” base to a “Regular” (non-modified) Base

To restore a “fixed frequency” base to a “regular/non-fixed” base, (so it behaves identically to a regular base),

1. Open the BaseFrequency_v3.exe software application.

2. Make sure the box next to the text “ENABLE F FIXED MODE” is unchecked, and then click on UPDATE.

3. With the Current Base Frequency is set to “00,” the base can now be adjusted by individual faculty through Settings/Preferences (see page one of this document).

